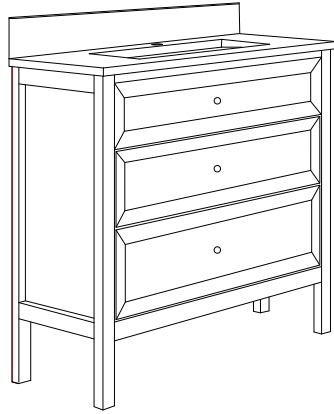
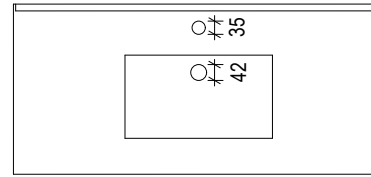


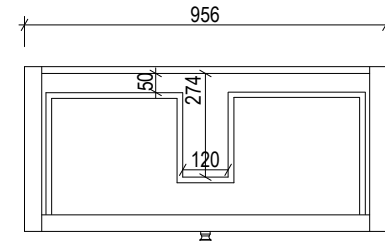
850
100



980
295 390 295

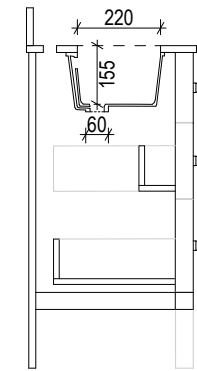


135
220
450
95



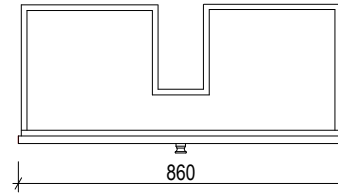
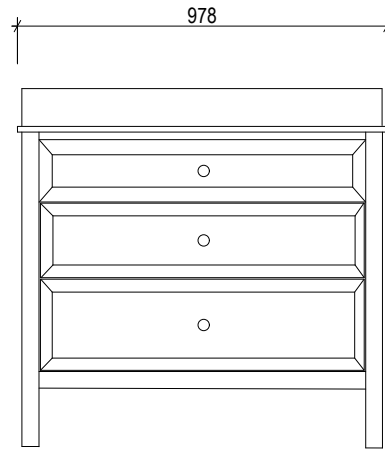
435

450
435

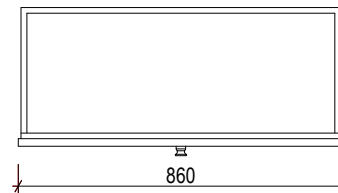


100
850

950
100
15
185
200
245
45
155



350
20



350
20



Vanity By Design

ABN: 99 121 837 143

Brisbane Address:

241 Monier Road, Darra QLD 4076

Sydney Address:

10/727 The Horsley Drive, Smithfield NSW 2164

Phone: Brisbane (07) 3376 6055

Sydney (02) 9604 4892

Email: enquiries@vanitybydesign.com.au

Website: https://www.vanitybydesign.com.au/

Name:	Hayley 1000
Size :	980 (W) mm x 450 (D) mm x 850 (H) mm
Type:	Freestanding
Cabinet Material:	Solid Sustainable Plantation Timber
Basin Material:	Ceramic under-mount or top mount basin
Bench Top Finish:	Smartstone options *
Splashback:	Removable splashback (NOT FULLWIDTH SPLASHBACK)
Taphole Options:	No taphole, 1 taphole or 3 tapholes
Vanity Colour Options:	Black, White, South Hampton Grey

Note:

Mirrors, Wastes and Tapware not included.
Plumbing fixtures must be installed by a qualified plumber (waste not supplied).
Vanity must be installed by a qualified tradesperson.
Failure to do so may void the warranty.
Vanity By Design vanities include a 5 year warranty on cabinets and tapware, 2 year warranty on tops and basins and 12 months warranty on mirrors.

Caution:

Component may be heavy and require two people to lift.
Do not stand or sit on vanity.